

## Blanket-and-Pillow To-Go Instructions

### *Blanket*

1. Get three pieces of blue-and-white fabric measuring 48"x47".
2. Cut one piece of fabric in half to lengthen the other two.
  - a. The heat seal should be on the short sides of the cut rectangle. The heat seals on the ends keep the blue and white fabric attached.
  - b. New rectangles should measure 23 1/2"x48"
3. Attach one cut rectangle to the end of one uncut rectangle. The heat seals should line up, and the blue sides should face each other. Sew together.
4. Open the fabric at the seam and topstitch.



5. Repeat steps two and three with the other pieces of fabric.
6. Once both pieces are sewn, line them up back to back with the white part facing in.
  - a. Make sure the two seams from attaching the cut fabric are not overtop each other.
7. Pin one long side and sew down. Repeat with the other long side.
8. Sew the short sides together. These do not need to be pinned first.
9. Complete!

### *Pillow*

1. Cut a sheet of blue fabric 36"x11".
2. Fold the sheet in half so it measures 18"x11", blue side out.
3. Sew seams a quarter of an inch out from the 18" length.



4. Turn the white side of the pillow out.



5. Stuff the pillow.



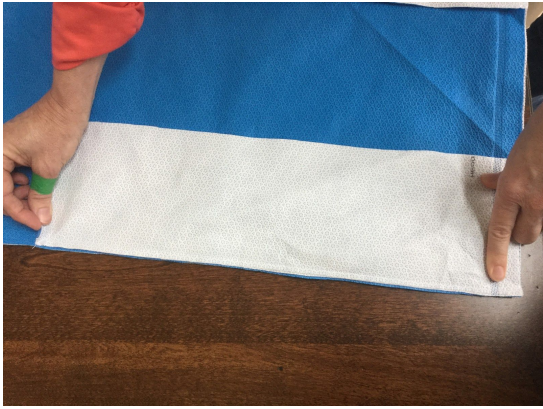
### **Bag**

1. Cut a rectangle 42"x16". This will be the main part of the bag.
2. Cut two smaller rectangles 18"x5". These will be the sides of the bag.
3. Lay out the large rectangle and pin the two smaller rectangles to the top, blue sides facing, as shown in the picture.



4. With a seam one-quarter inch, sew down the long length of one rectangle 17 1/2", leaving the last half-inch loose.





5. Match the five-inch edge to the long length of the bag, as per photo, and sew down.



6. Match the 18" length to the remaining length of the bag and sew with a quarter inch seam.



7. Repeat with the other rectangle.

8. Fold down the top inch and a half of the bag and sew.



### ***Handles***

1. Cut two rectangles 16"x3-1/2".
2. Fold each rectangle in half the long ways, blue side out, and sew down with a quarter inch seam.



3. Cut two rectangles 36"x3-1/2".
4. Do the same with the long handles as with the short handles.



### ***Attachment***

1. Attach the long handles to the white side of the bag and sew down.



2. Pin the short handles the blue side of the bag and sew down.





3. With both handles up, sew the pillow to the top of the bag.



4. Turn the bag inside out and insert blanket.
5. Complete!

