

“Caring for Our Patients By Caring for Our Environment”



May 14, 2015

Michelle Bouchard BSN, RNC-NIC, Clin IV

“Humans, in service to God, have special roles on behalf of the whole Creation. Made in the image of God. We are called to care for the earth as God cares for the Earth.”

Evangelical Lutheran Church(1993)



**Go
Green**
Stewards of our resources.

Code of Ethics and responsibility in Caring for the Environment..

“The importance of the environment, emphasizing how critical fresh air, pure water, sufficient food, efficient drainage, cleanliness and light are to health.”

“No amount of medical knowledge will lesson the accountability of nurse environment to promote positive life processes.” Florence Nightingale, 1860

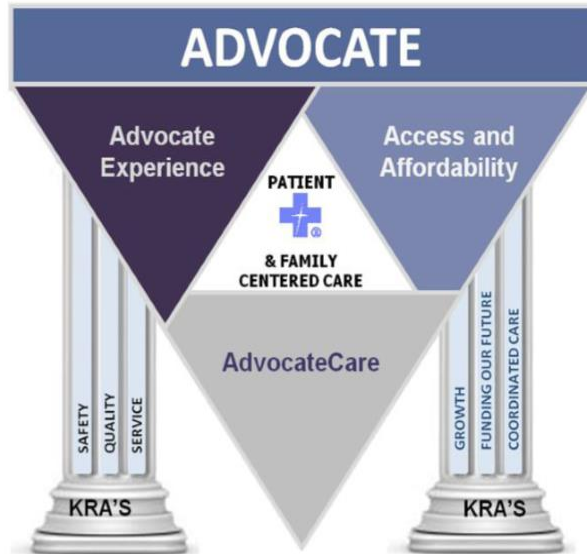
The Precautionary Principle: When an activity raises threats of harm to human health or the environment, precautionary measures should be taken even if some cause and effect relationships are not fully established scientifically. ANA, 2003

The definition of going green involves waste reduction and energy and resource conservation. Conservation is defined as conserving resources. AORN



To *in establishing, maintaining, and improving healthcare environments and*
co *ent conducive to the provision of quality health care and consistent with the*
va *n through individual and collective action.* Advocate Christ Medical Center
Power, 2010

Practice Environment Model



MVP	BEHAVIORS OF EXCELLENCE	LEARN (PROFESSIONAL PRACTICE MODEL)
PARTNERSHIP	"BE" RESPONSIVE	L EADERSHIP
COMPASSION	"BE" RESPECTFUL	E NVIRONMENT
EXCELLENCE	"BE" PROFESSIONAL	A UTONOMY
EQUALITY	"BE" ACCOUNTABLE	R ESEARCH
STEWARDSHIP	"BE" COLLABORATIVE	N OVICE TO EXPERT

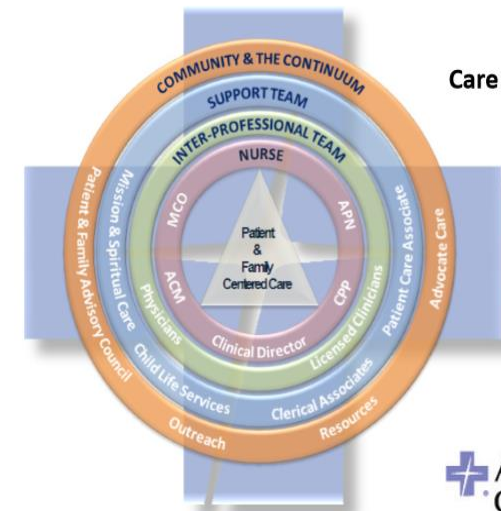
Advocate Christ Medical Center and Advocate Children's Hospital – Oak Lawn will be the tertiary and quaternary providers of choice for the entire southern and southwestern Chicago market. Our clinical outcomes and patient, physician and associate satisfaction results will be top decile in the country, supporting and giving evidence to our faith-based mission and values.

The Mission of Advocate Health Care is to serve the health needs of individuals, families and communities through a holistic philosophy rooted in our fundamental understanding of human beings as created in the image of God.

Professional Practice Model - LEARN

L eadership	E nvironment	A utonomy	R esearch	N ovice to Expert
<p>Commitment to transformational leaders at all levels with structures to support the development, participation, contributions and recognition of individuals as well as interprofessional teams.</p> <p>Exemplified by:</p> <ul style="list-style-type: none"> Engaging in life-long learning Mentoring nurses at all levels of the organization Advocating for resources to support unit, division and organizational goals Recognizing and rewarding innovation Providing communication vehicles that allow for feedback to drive change Building strong relationships 	<p>Maintain a safe, accepting and innovative atmosphere for patients, families and associates in order to promote healing, learning and physical and spiritual well being.</p> <p>Exemplified by:</p> <ul style="list-style-type: none"> Participating actively in a dynamic and collaborative workplace Supporting the Advocate MVP Behaviors of Excellence Committing to a culture of inclusion Promoting and understanding the culture of safety Creating an experience of engagement and trust (service) Focusing on Patient and Family Centered Care through shared decision making 	<p>Enhance clinician's control over decisions pertaining to patient care and the professional practice environment through shared governance.</p> <p>Exemplified by:</p> <ul style="list-style-type: none"> Engaging in professional decision making based on professional practice standards and skills Creating an experience without harm (safety) Promoting clinical advancement Allowing nurses to practice to the full extent of their education and preparation Providing clinicians with a voice Being accountable for best practice Participating in peer review 	<p>Apply current scientific findings, implement performance improvement and evidence-based practice projects, and conduct nursing and interprofessional research in order to improve patient outcomes across the care continuum and professional practice environment.</p> <p>Exemplified by:</p> <ul style="list-style-type: none"> Translating evidence into practice in a variety of clinical settings Developing and reviewing policies & procedures, order sets and protocols based on current evidence Designing performance improvement, EBP and research projects that explore innovative interventions and support alternative interventions Re-evaluating the efficacy and safety of nursing practices based on tradition Supporting ethical clinical and research practices Providing opportunities to disseminate findings Offering resources and services to conduct research 	<p>Deliver safe, evidence-based and effective patient care through interactions with patients, families, clinical colleagues, nursing leadership and professional organizations.</p> <p>Exemplified by:</p> <ul style="list-style-type: none"> Embracing interprofessional based care and practice Effecting clinical judgments based on critical thinking Integrating care through a collaborative & comprehensive plan of care Enhancing the nurse/patient relationship Applying and integrating current scientific evidence in nursing practices Using technology to deliver effective patient care Creating an experience of excellence (quality) Committing to professional engagement and development <ol style="list-style-type: none"> Continuing education/coaching Certification Competency Onboarding

Nursing Theorist - BENNER



Care Delivery Model

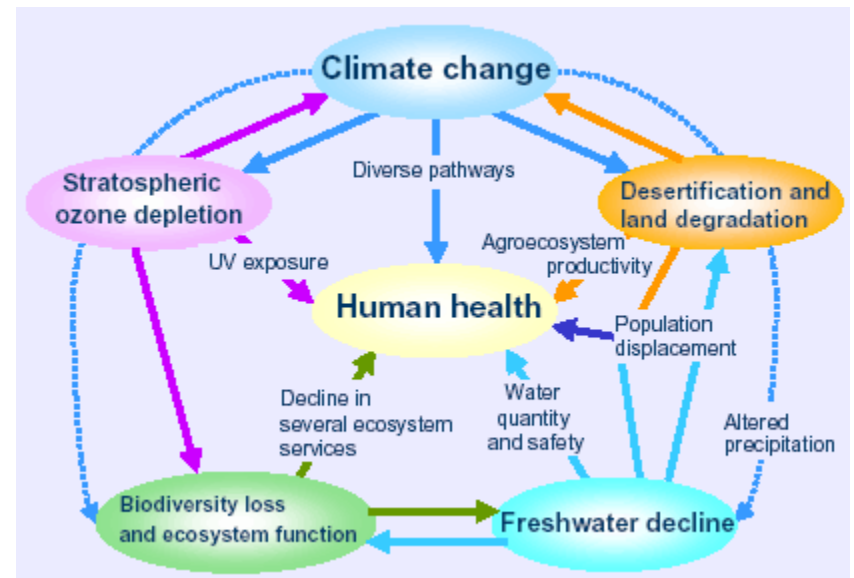


The direct link between the health of our environment and human health...

World Health Organization (WHO)

“Climate change has a range of complex health impacts, including temperature-related illness and death, injuries and illnesses due to extreme weather events, the spread of infectious disease vectors, increases in water borne illness and wide-ranging impacts from air pollution. Close to one fourth of the diseases experienced around the world are due to environmental exposure:”

Asthma, autoimmune conditions,
Allergies, emphysema, infertility,
Parkinson’s disease, cancer,
Heart disease, physiological and
Psychological stress that are
Exacerbated by environmental
Contaminants.



What's all the talk about “Global Warming?”

“Global climate change is no longer an ominous future threat but a dawning reality — one that is already creating disturbing shifts in the natural and human environment and is eroding the delicate balance of our planet's ecosystem and the species that depend on it.”

World Healthcare Organization (WHO)



“Can we please clarify Greenhouse Gas?”

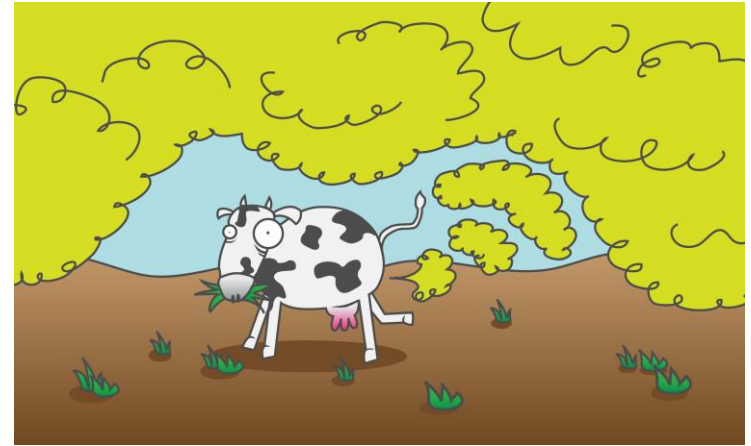
- Natural and manmade factors
- Greenhouse gases (GHG's)-
 - CO₂**- Emitted primarily through the burning of fossil fuels (oil, natural gas, and coal), solid waste, and trees and wood products.

Deforestation and soil degradation add carbon dioxide to the atmosphere, while forest regrowth takes it out of the atmosphere.

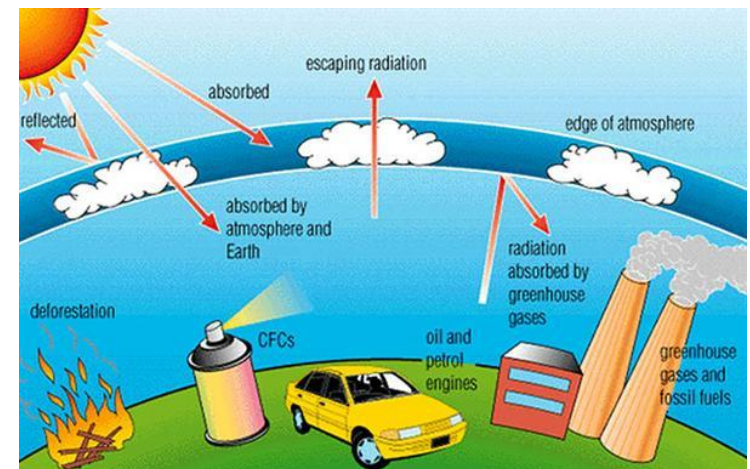
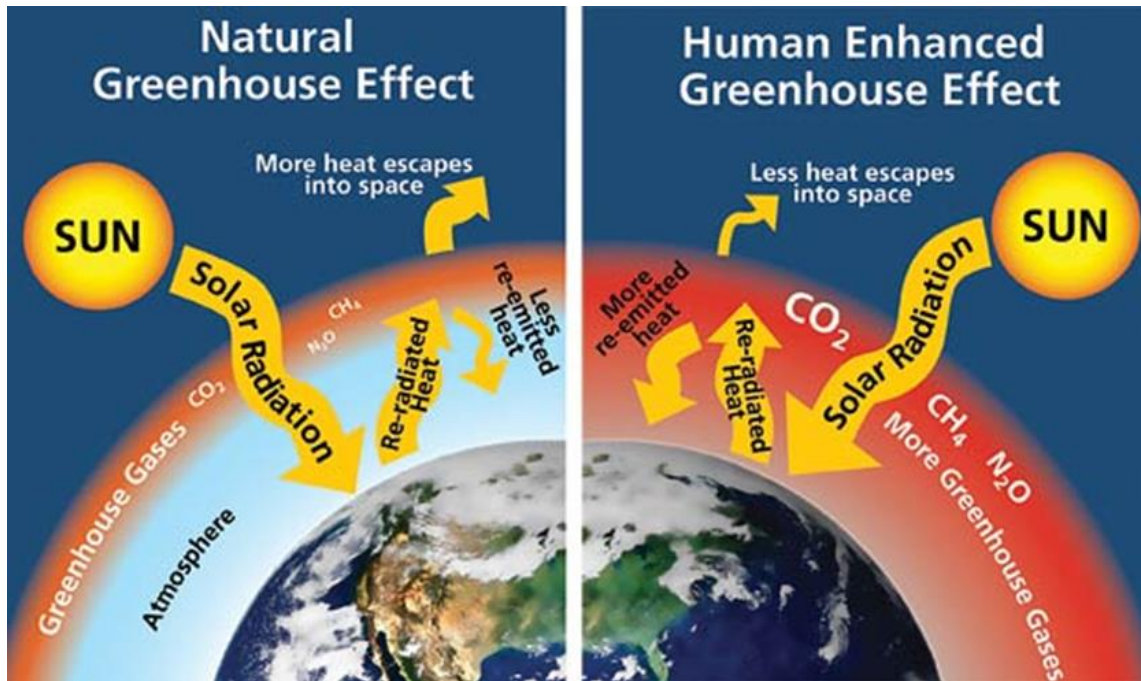
CH₄- methane Emitted during the production and transport of coal, natural gas, and oil. Methane emissions also result from livestock and agricultural practices and from the anaerobic decay of organic waste in municipal solid waste landfills.

N₂O-Nitrous Oxide- Emitted during agricultural and industrial activities, as well as during combustion of fossil fuels and solid waste.

Fluorinated gases: Foams, Aerosols, A/C's & refrigeration.



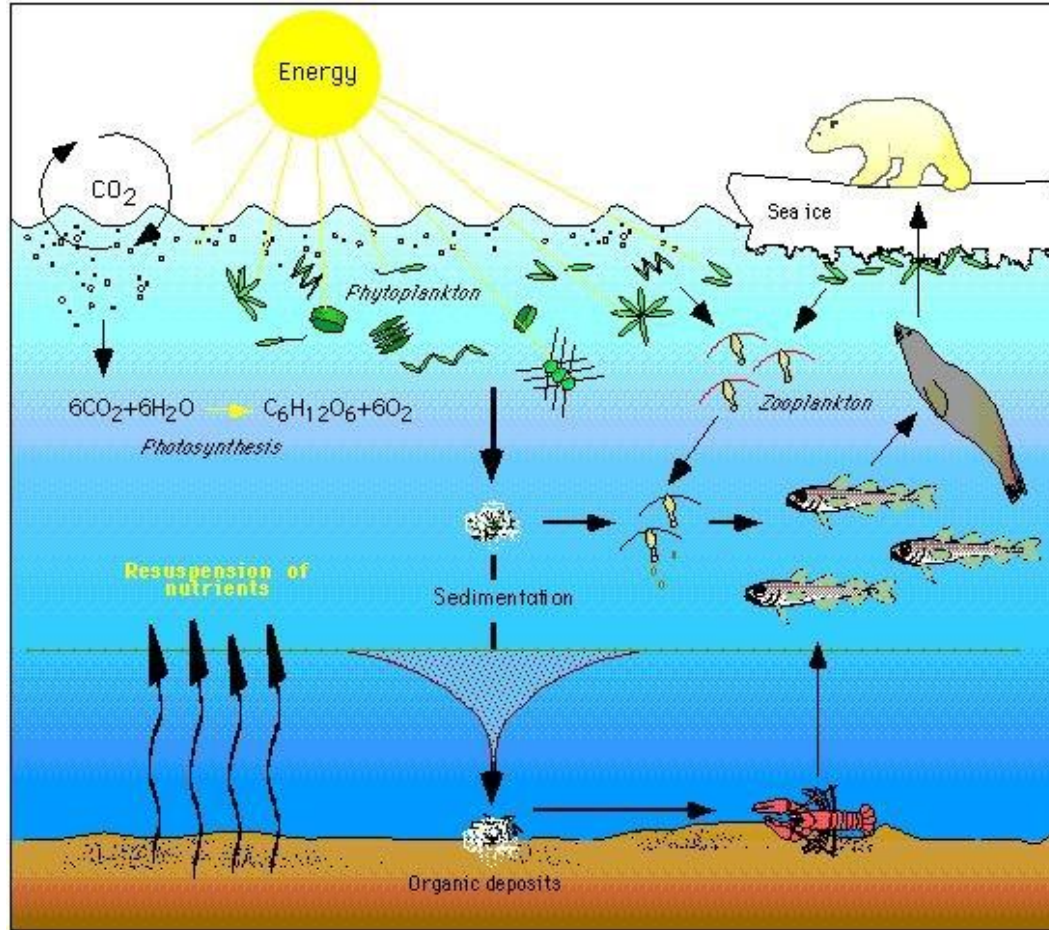
Greenhouse gas cause and effect...



Let's get clinical with the Ocean...

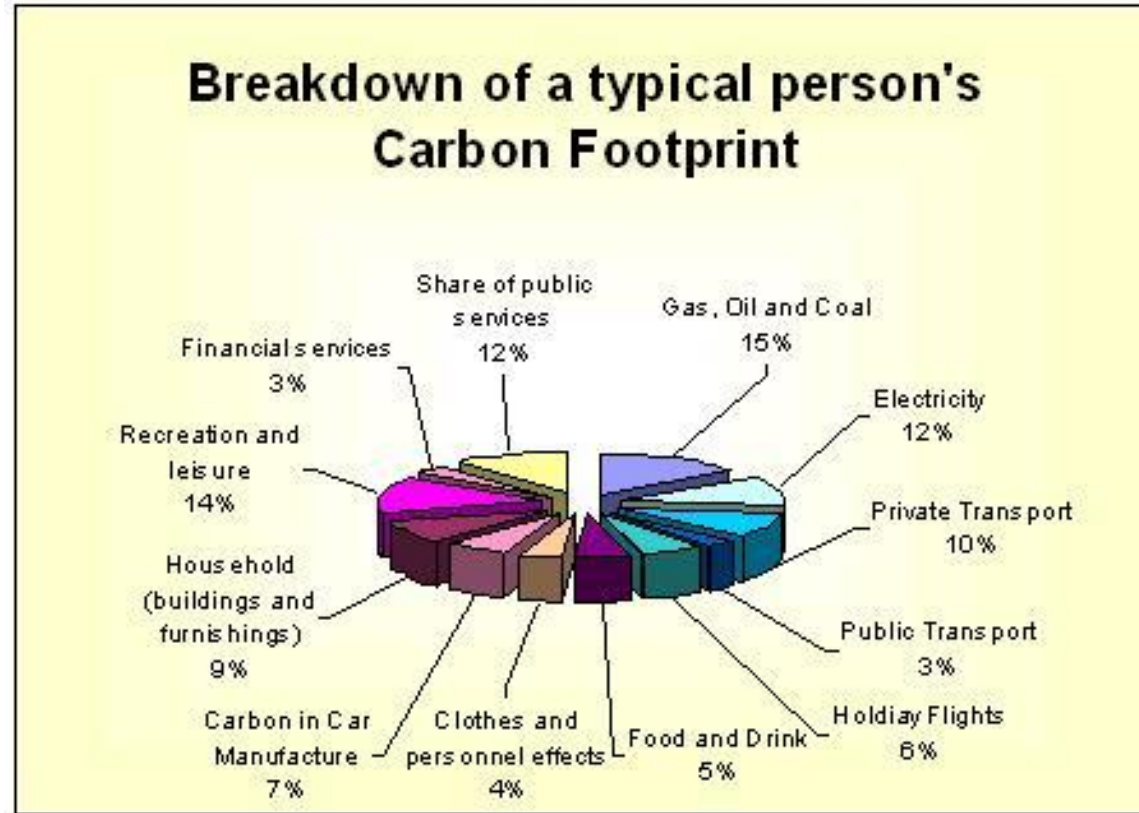


pH balance
Bicarb
Acid
CO₂

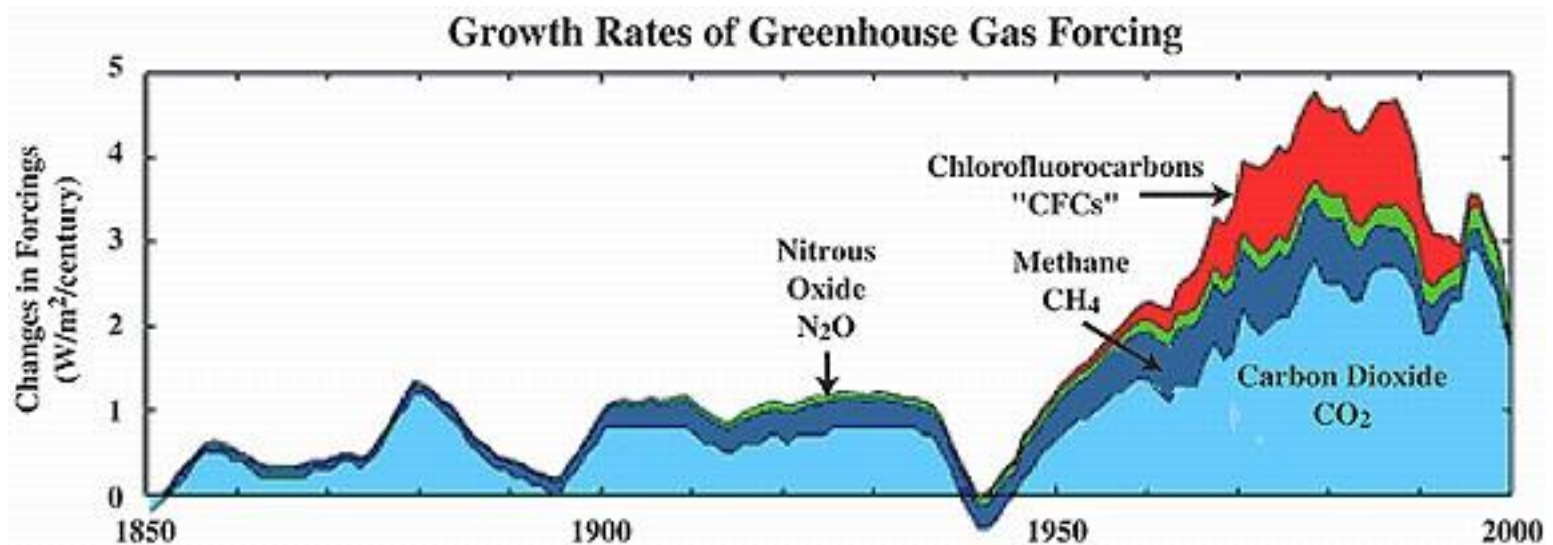


CO2 and You...

(I love premie size carbon footprints!)



Growth of GHG's over last 160 years...



Unless someone like YOU
cares a whole awful lot,
nothing is going to get better.
It's Not. -- ^{The} LORAX

Healthcare's Contribution to the Environment...



- The American health care sector accounts for nearly a tenth of the country's carbon dioxide emissions (Chung & Metzger, 2009)
- The nation's hospitals generate 2.7 metric tons (6,600) tons of waste per day. They spend \$44 to \$68 per .9 metric ton for waste disposal, creating a financial incentive to recycle (Practice Greenhealth, 2011).



Chemicals...

Dioxins: PVC, DEHP: IV bags and tubing, gloves, pipes, carpet, tiles, plastic food wrap, wall coverings, office furniture and supplies)

- - Extremely toxic and potent environmental contaminant
- - Particularly toxic to developing immune system
- - Disrupt growth factors/hormones even at low levels
- - Cancer causing

Pesticides/Flame Retardants

Cleaners & Disinfectants:

- Triclosan
- Green Seal Certified

Mercury & Lead (glass thermometers, sphygmometers, lab chemicals, preservatives).

- Phased out
- Neuro toxicant

Hormones & Antibiotics (in our diet)

We know that:

-Even small doses of chemicals can cause disease, interfering in sexual development, disrupting hormones and causing cancer at very low levels.

-Children and developing babies are most vulnerable

-Hundreds of synthetic chemicals are found in human breast milk and in the chord blood of babies. See: Body Burden: Pollution in the Newborn. (pdf)

What can WE do about all this???

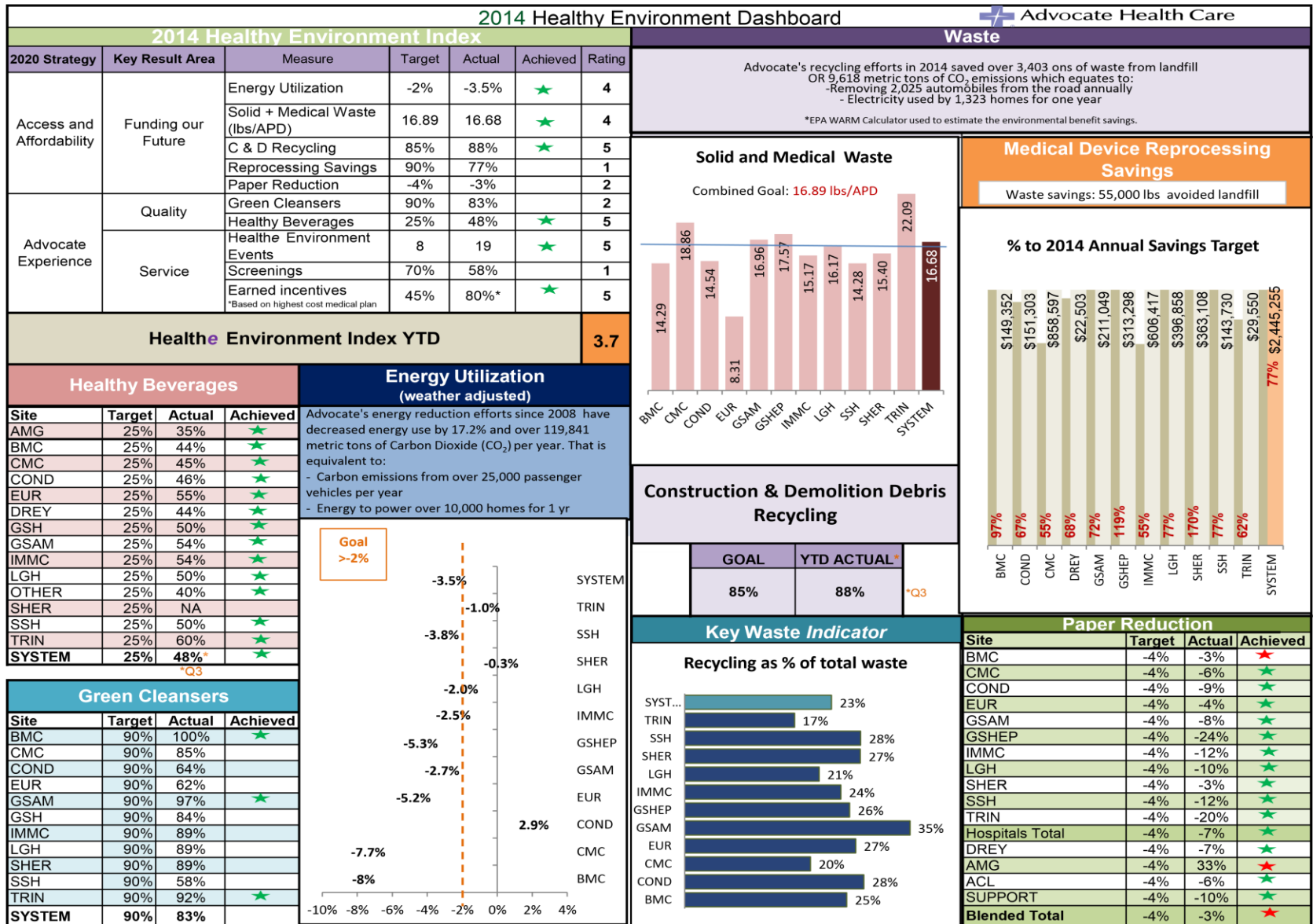


Advocate's investment in Caring for the Health of the Environment

- Developed Green Goals
- Partnered with Practice Greenhealth & Healthy Hospital Initiative
- LEED Building Certification
- Green Advocates merging with Healthe U
- Hiring of Energy Manager and Environmental Stewardship Manager for Advocate
- Invests in recycling: Recycling Program, Batteries, Construction & Design, Blue bags
- Commitment to Healthier Foods and Beverages
- Farmers Markets
- Growing Power Organic Produce Orders
- Reducing vendor deliveries to hospital
- Greening in the OR Initiative
- Pharmaceutical Waste Program
- Charging stations for electric cars
- Recognizing MVP's in Environmental Stewardship
- Environmental Purchasing Policy
- We said NO to Styrofoam.
- Me! "Thank you Jean!"
- Responsible. "Do No Harm First!"



Advocate Environmental Stewardship Dashboard 2014



Paper Reduction

Site	Target	Actual	Achieved
BMC	-4%	-3%	★
CMC	-4%	-6%	★
COND	-4%	-9%	★
EUR	-4%	-4%	★
GSAM	-4%	-8%	★
GSHEP	-4%	-24%	★
IMMC	-4%	-12%	★
LGH	-4%	-10%	★
SHER	-4%	-3%	★
SSH	-4%	-12%	★
TRIN	-4%	-20%	★
Hospitals Total	-4%	-7%	★
DREY	-4%	-7%	★
AMG	-4%	33%	★
ACL	-4%	-6%	★
SUPPORT	-4%	-10%	★
Blended Total	-4%	-3%	★

Energy Utilization (weather adjusted)

Advocate's energy reduction efforts since 2008 have decreased energy use by 17.2% and over 119,841 metric tons of Carbon Dioxide (CO₂) per year. That is equivalent to:
- Carbon emissions from over 25,000 passenger vehicles per year
- Energy to power over 10,000 homes for 1 yr

Goal >-2%

Site	Value (%)
SYSTEM	-3.5%
TRIN	-1.0%
SSH	-3.8%
SHER	-0.3%
LGH	-2.0%
IMMC	-2.5%
GSHEP	-5.3%
GSAM	-2.7%
EUR	-5.2%
COND	-7.7%
CMC	-8%
BMC	-8%

Healthy Beverages

Site	Target	Actual	Achieved
AMG	25%	35%	★
BMC	25%	44%	★
CMC	25%	45%	★
COND	25%	46%	★
EUR	25%	55%	★
DREY	25%	44%	★
GSH	25%	50%	★
GSAM	25%	54%	★
IMMC	25%	54%	★
LGH	25%	50%	★
OTHER	25%	40%	★
SHER	25%	NA	
SSH	25%	50%	★
TRIN	25%	60%	★
SYSTEM	25%	48%*	★

*Q3

Green Cleaners

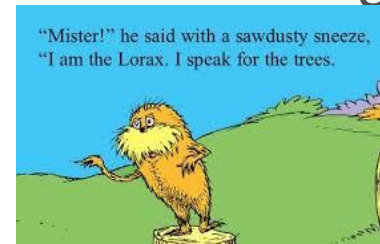
Site	Target	Actual	Achieved
BMC	90%	100%	★
CMC	90%	85%	
COND	90%	64%	
EUR	90%	62%	
GSAM	90%	97%	★
GSH	90%	84%	
IMMC	90%	89%	
LGH	90%	89%	
SHER	90%	89%	
SSH	90%	58%	
TRIN	90%	92%	★
SYSTEM	90%	83%	

Healthe Environment Index YTD

3.7

Green Advocates (expanded former Green Team)

- Approximately 70 department representatives
- Your department's Green "Rebel Rouser"
- Responsible for leading the Recycling Initiatives within the department
- Communicate hospital and system sustainable updates at huddles and monthly staff meetings
- Invited to system wide learning and webinars
- Help certify your department in the Sustainable Workspace Certification
- Think outside the box for resourceful means of reducing, reusing and recycling your waste.



Going Green

SUSTAINABLE WORK SPACE CHECKLIST

Reduce waste and energy with these simple tips for Greening your work space.	Y/N
Recycling Bins: Are recycling bins located in all common areas, kitchen, break and conference room, copy room, lounges?	
Recycling bin labels: Are Appropriate labels indicating types of materials accepted for recycling on all recycling bins?	
Monitoring recycling: Do department <i>Green Advocates</i> monitor and communicate proper recycling practices within to coworkers?	
Paper recycling: Does each work area (office, cube, nurse's station, etc.) have a desk-side non-confidential paper recycling bin?	
Battery recycling: Are collection containers available and labeled for battery recycling?	
Printer ink and toner cartridge recycling: Does your department purchase <i>recycled</i> ink and toner cartridges and return cartridges to the office supply vendor to be recycled?	
Cardboard recycling: Is cardboard packaging placed in an appropriate recycling container?	
Patient care item recycling: Does your department recycle clean patient care items and/or packaging?	
Lights: Are lights turned off in unoccupied common areas, offices, meeting rooms, kitchens and bathrooms?	
Computers: Are single-user computers shut down at the end of a work shift? <i>NOTE: shutting off computers saves more energy than screen saver mode.</i>	
Office Paper reduction: Are printers and copiers set to print <i>duplex</i> and <i>black and white</i> settings, hold paperless meetings, utilize electronic file management and projection tools?	
Printers: Are the number of personal desk top printers eliminated or reduced within the department?	
Office supplies: Do you access a used office supply exchange; reduce frequency of orders to once or twice/week; select <i>recycled-content</i> office supplies when ordering new supplies; and reduce waste by using reusable totes for deliveries in place of cardboard packaging?	
Furniture and surplus medical supplies: Do you divert waste by contacting Facilities/Operations department to dispose of unwanted furniture for potential reuse or donation?	
Communication: Does the department <i>Green Advocates</i> share news about Green events and initiatives at staff meetings, bulletin boards and via email?	

- Aligned with Advocate's Environmental Stewardship Goals, KRA's & dashboard
- Checklist for Green Advocates, associates and managers to complete.
- Improves Efficiency, Reduces Waste, Increases Reuse and Recycling
- Supports Local Engagement in the community and around the world.



“Green Advocates” Represented Departments

(All clinical and non-clinical departments throughout the campus)

Administration*	Keyser Center*	Quality Resource*	Imaging
Ambulatory	Labor & Delivery*	Short Stay	Peds ER
ASHU	Library Services*	SINI*	Human Resource
Biomed*	MICCU*	Speech Pathology	Food & Nutrition*
Building Ops*	MRI	Surgery Pre/Post	
Cardio-Diagnostic	Nursing Resource*	7E	
Care Management*	Neuro Science Admin*	7W	
Card-Pulm. Rehab	Occupational Therapy	7S*	
Cath-Lab*	Paramedic Program*	8E	
Child Life	NICU*	9S	
CHF Clinic*	Patient Advocacy*	6 S Rehab Services*	
Clinical Education*	Peds Pharmacy*	5E Psyche	
Conference Center*	Pharmacy*	4 Hope*	
Copy Center*	PICU*	3 E/W Postpartum*	
Disability	Procedure Center	2Hope	
General Stores	Progressive Step down	PICU*	
Hemodialysis	Peds Resp. Therapy*	PSHU	
Infection Prevention*	PLM*	Volunteer Services	
Intensive Care	Public Relations	Imaging Center	
Infusion Center*	Respiratory Therapy	Imaging Registration*	

* **Certified in the Sustainable Workspace Certification**



What is Recyclable?

- Single Stream Recycle
- Pulse ox Probes
- Batteries
- Patient Care Items
- Oral Syringes (Needless, separate the plunger, empty)
- Ink cartridges and toners
- Paper
- Sterile Trays
- Metal Instruments
- Plastic wrappers (separate the paper)
- Water pitchers & liners
- Computer hardware
- Old Books & Magazine



What is Reusable?

- Clean, unused medical supplies (Don't be a hoarder either though!)
- Blue wrap
- Pharmacy Bubble wrap and Plastic Bags
- Pharmacy Coolers and Icepacks
- Scrap paper
- Baby formula
- Terracycle ex. NICU collects Huggies Wrappers
- Our "Writing Brigade" (Supports the Oak Lawn Food Pantry)



The Ingenuity of Blue Wrap...

Captured over 4 tons of blue wrap in 2012

Non-biodegradable

Multiple uses



“RE-USE” supports Our neighbors.., Locally and Globally

- Writing Brigade: Many departments~ Oak Lawn Food Pantry
- Terracycle: NICU: Huggies Wrappers
- Third World Countries: Clean Unused medical supplies ~ General Stores
- Local Animal Shelter: Sterile Processing: Blue wrap and supplies
- Ronald McDonald House: Pop Top Tabs
- Pharmaceutical packing of Coolers/Ice packs



Project C.U.R.E. Crew



Project C.U.R.E accepts clean unused medical supplies for healthcare organizations. These items are received at the Melrose warehouse and sorted. Then shipped to over 155 third world areas around the globe.



How can you be an Environmental Steward?

Incorporate recycling into your daily work flow.

Eliminate paper copies of agendas and minutes.

Use email vs. printing many copies.

Look for ways to REUSE, REDUCE, RECYCLE!

Turn off lights and computers when not in use.

Bring your own mug to work.

Support your departments Green Advocate

Be a Green Advocate!

Check out the Advocate Environmental Stewardship website.



References:

Children's Environmental Health Network. (2010) *Eco-Healthy Child Care: Recycling and Garbage*. Washington, DC.

Dickerson, P. (2011). *Is Your Work Environment Healthy?*

Etzel, R. (2012). *Pediatric environmental health*. American Academy of Pediatrics: Elk Grove Village, IL.

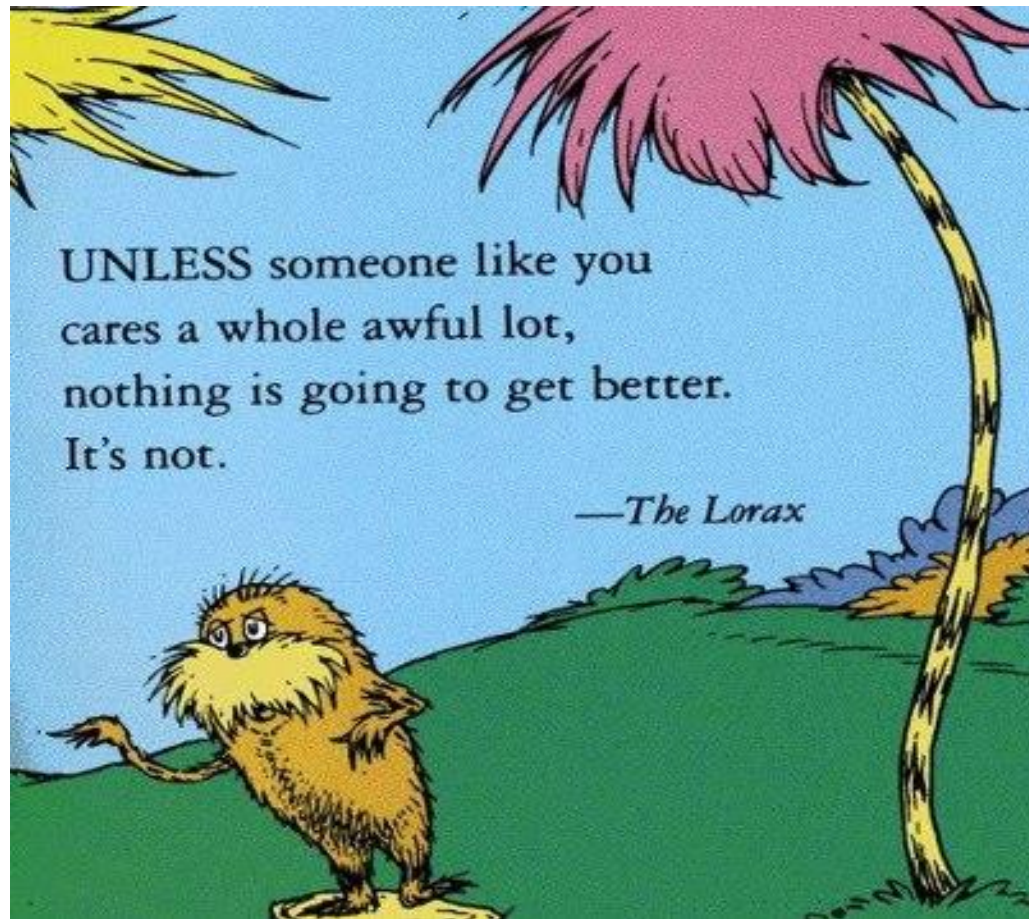
Fowler, M., ed. (2010). *Guide to the code of ethics for nurses: interpretation and application*. Silver Spring, MD: American Nurses Association. Nursebooks.org.

Jaeger, B. (2013, July 3). The public's right to know should apply to water safety. *State of the State-Illinois Issue*. Retrieved from <http://ilinoisissues.uis.edu/archives>.

Health Care Without Harm. *Phalates and DEHP*. Online retrieval:
http://noharm.org/us_canada.issues.toxins/pvc_phthalates/reports.php. April 27, 2013.

Health Care Without Harm. *Toxic Chemicals Found in Doctors and Nurses*. Press Release October 8, 2009. Retrieved at http://www.noharm.org.us-canada/news_hcwh/2009.

Practice Greenhealth. *Chemicals*. Online retrieval <http://practicegreenhealth.org/topics/chemicals>. July 2, 2013.



UNLESS someone like you
cares a whole awful lot,
nothing is going to get better.
It's not.

—*The Lorax*

Thank you!